

## [Katy and the Big Snow](#)

lessons and printables by  
Tina Franks, Tamara, Ginger A.  
Michelle Amos, and Ami Brainerd



### Katy and the Big Snow Lessons and Printables

Language Arts: Spelling Pages  
Language Arts: Create a Character  
Language Arts: Copywork  
Math: Measurement  
Math: Story Problems  
Social Studies: Traffic Signs  
Math: Traffic Sign Graph  
Social Studies: A City  
Social Studies: Compass  
Social Studies: Community Helpers

### Helpful Links

[Neighborhood Map](#) (learn directions)

[Weather Words Lapbook](#)

[Weather Wheel](#)

## Language Arts: Build Words (from the story)

Using Scrabble Tiles, [alphabet stamps](#), [magnetic alphabet tiles](#), or another manipulative of your choice, build the words!

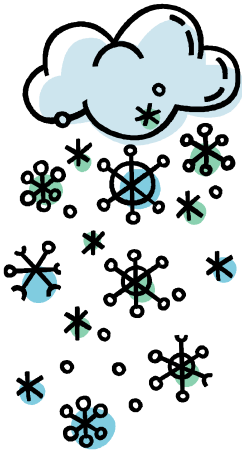
After your student has built the words a few times, see if she recognizes them in the story. Let her read them to you!

10

t

e

n



s

n

o

w



h

e

l

p



d

o

w

n



r

o

a

d



w

i

n

d



r

a

i

n



c

i

t

y

## **Language Arts: Create a Character**

This book tells you a lot about Katy! What was she? What did she look like? Where did she live? What jobs did she have? What other personality traits have you noticed about Katy?

Log her appearance, ability, and behavior on the page provided. Then encourage your student to create his own character! After he's finished with the page, he may even want to write a story based on his character!

# What I Know About Katy

Her Appearance	Her Ability
Her Behavior	Draw a picture of Katy.

# My Character

My Character's Appearance	My Character's Ability
My Character's Behavior	Draw a picture of your character.

# KATY and the BIG SNOW

Slowly and steadily Katy started to plow out the city.

---

Slowly and steadily

Katy started to

plow out the city.



## **Math: Measurement**

The story says that, "By noon it was four inches deep . . . By afternoon the snow was ten inches deep."

Show your student a ruler and the inch marks. Can he find something that is four inches long? Ten inches long? Use a ruler and a tape measure to complete the next page together.

## **Math: Story Problems**

Help your student solve the story problems

# Measuring

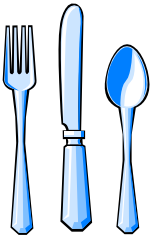
How many inches long is your shoe?



How many inches long is your hand?



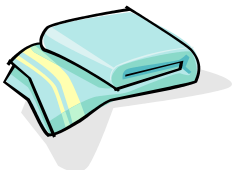
How many inches long is a spoon?



How many inches long is your pillow?



How many inches long is a towel?



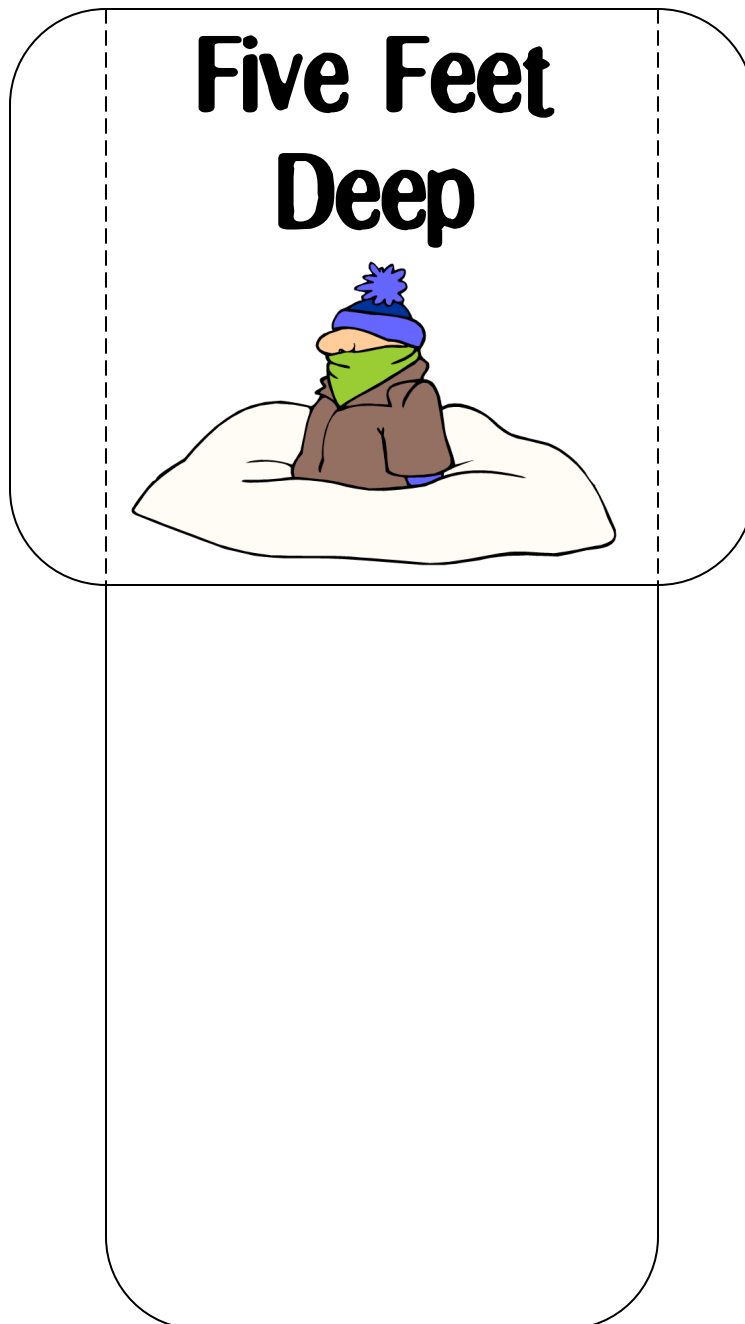
How many inches long is a book?



## Math: More Measurement

How deep was the snow? Five feet deep! (And then it kept getting deeper!)

Give your student some string. Let him measure five feet. Mark off each foot (with some masking tape folded over the string; you can write on it once it's folded, if desired, to indicate one foot, two feet, etc.). Using the string, can your student find items around the house that are one foot, two feet, three feet, etc.? Store string in the pocket.



# Katy and the Big Snow Story Problems

1. The little plow is twenty-five horse power. Katy is fifty-five horse power. How much more horse power does Katy have than the little plow?

2. Katy has five speeds forward and two speeds backwards. How many speeds does Katy have?

3. Katy bulldozed ten lots the first week and twenty lots the second week. How many lots did she bulldoze all together?

4. Geopolis has a big job for the Highway Department. The job will require two stone crushers, four truck gas shovels, one five ton truck, and Katy. How many construction vehicles are needed to complete the job?

5. Four inches of snow fell on Geopolis the morning of the big snow. More snow fell that afternoon for a total of ten inches. How much snow fell in the afternoon?

# Katy and the Big Snow Story Problems

6. The Chief of Police measured the snow in Geopolis. It was two feet deep. How many inches deep is the snow in Geopolis?

7. The Geopolis Post Office had twelve huge bags of mail to deliver. Four bags were delivered before the city shut down due to weather conditions. How many bags of mail weren't delivered?

8. Katy plowed out the Post Office. Each mail truck was then able to load two bags of mail. How many mail trucks were needed to deliver the eight bags of mail?

9. Two trucks from the Water Department and three trucks from the electric company are following Katy. How many trucks are following Katy?

10. Katy made a lot of new friends the day of the Big Snow. She had twenty-five friends before the snow and after the Big Snow she had one hundred friends. How many new friends did Katy make?

## Social Studies: Traffic Signs

Does your student know what the various traffic signs mean? Take some time to learn them.










		
Parking	No Parking	No Parking
		
Hospital	STOP	Pedestrian Crossing
		
Road Work Ahead	One Way	Dead End

Using the next page, take your student on a drive and let him use tally marks to track the signs he sees. Use the graph on the following page to record the data.

Which sign was seen the most? How many signs were seen altogether?



# Street Sign Graph

10	10	10	10	10	10	10	10	10
9	9	9	9	9	9	9	9	9
8	8	8	8	8	8	8	8	8
7	7	7	7	7	7	7	7	7
6	6	6	6	6	6	6	6	6
5	5	5	5	5	5	5	5	5
4	4	4	4	4	4	4	4	4
3	3	3	3	3	3	3	3	3
2	2	2	2	2	2	2	2	2
1	1	1	1	1	1	1	1	1
								



## **Social Studies: A City**

Look at the map on pages 6-7. What is necessary for a city to function? Make a list with your student. Discuss the places in your own town or city. Why are they important?

Get a poster board or large piece of butcher paper and let your student create his own city with roads, signs, buildings, houses, etc. Use the buildings on the next few pages, if desired. Add some matchbox cars and have fun!

You can also extend the learning by making a book about your city. Take photos of important places (police station, post office, grocery store, etc.) and compile them into a book your child can read!

# What Does a City Need?

---

---

---

---

---

---

---

---

---

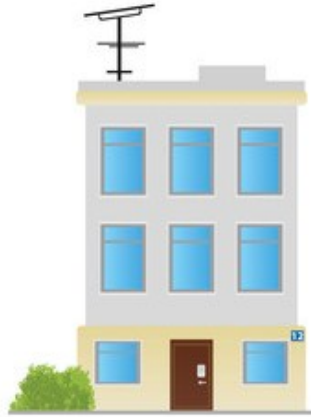
---

---

---



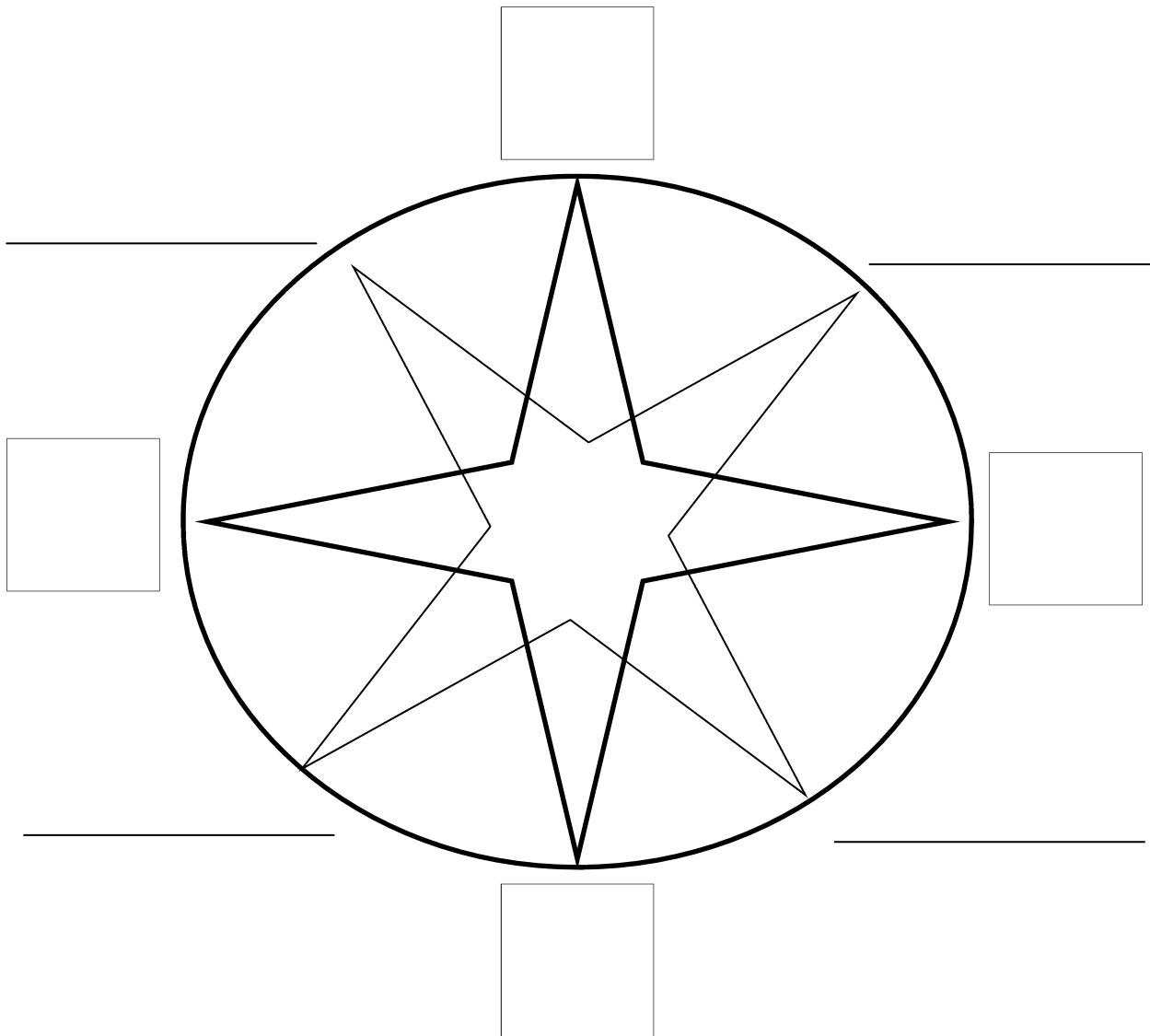
# Make Your Own City



# Make Your Own City



# POINTS OF



# COMPASS

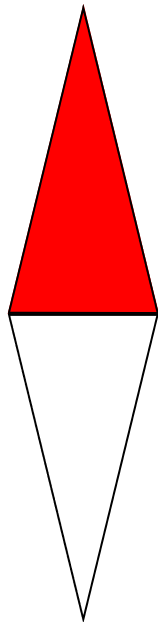
## For Katy and the Big Snow

Points of the Compass:

Fill in the boxes with N, S, E and W (for North, South, East and West).

For older child, on the lines write in NE, NW, SE and SW (for North East, North West, South East and South West).

Cut out the directional needle (below) as one piece. Using a split pin, centre it through the middle of the compass so you can spin it like a 'real' compass. (You may wish to back the needle with cardboard for strength).



# Community Helpers

## Social Studies: Community Helpers

This book is a great introduction to how a city works together! Use these cards below to discuss community helpers and what they do to benefit the community. You might even want to take your student to visit a firehouse, a police station, the library, the highway department, or other places where community helpers serve. Another idea is to take your community helpers thank you notes!

### Police Officer



---

---

---

---

---

---

---

---

### Mail Carrier



---

---

---

---

---

---

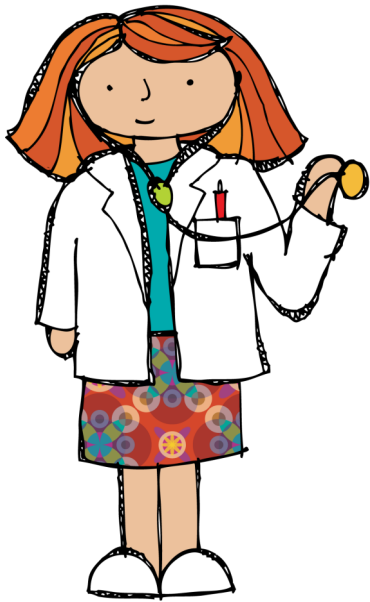
---

---

# Community Helpers

[www.homeschoolshare.com](http://www.homeschoolshare.com)

**Doctor**



---

---

---

---

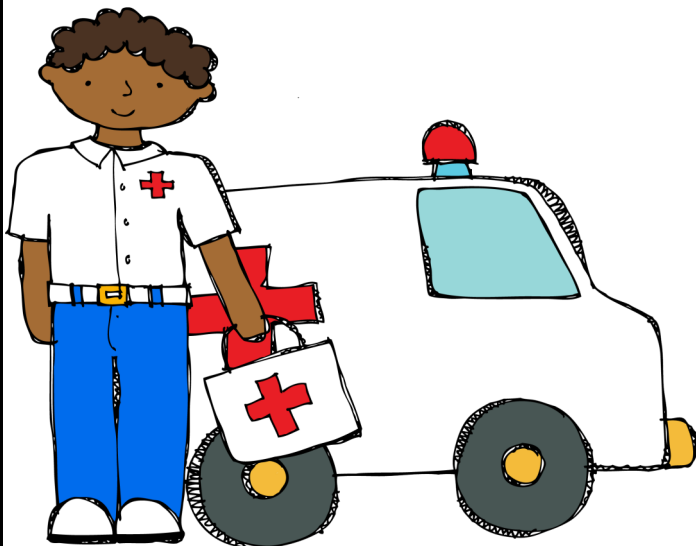
---

---

---

---

**EMT**



---

---

---

---

---

---

---

---



# Community Helpers

**Sanitation Worker**



---

---

---

---

---

---

---

---

**Firefighter**



---

---

---

---

---

---

---

---

Cut out cards. Cut out pockets. Fold the back flap up and side flaps around the back. Glue down. Store community helper cards in pockets.

[www.homeschoolshare.com](http://www.homeschoolshare.com)

